


# Exhibit 6

We've just launched a new portal to help you explore stocks, crypto, ETFs, and more data  
Access >

# Financial Data that drives your success

Access stocks, forex and other financial assets from anywhere at any time.

Start now      [Contact sales >](#)



**BTC**

10,617.94 USD

Bitcoin - Binance

+85.32

+0.81%


**PORTFOLIO**

Q

Search...

**ZM**

Zoom Video...




492.60

+24.13

**SPY**

SPDR S&P...




330.30

+3.33

**^DJI**

Dow Jones...

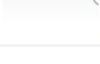


27,288.18

+140.48

**^KQ100**

Kosdaq 100...

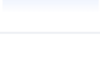


1775.93

-64.56

**USD/JPY**

US Dollar Jap...

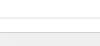


104.93

+0.29


**ETH/USD**

Ethereum US...



344.19

+3.96



**Apple Inc.**  
AAPL - NASDAQ

111.81 USD

+1.73 +1.57% ▲

Open

112.68

Prev Close

110.08

Volume

183,055,376

Market Cap


1.883T

Day Range

109.16 - 112.86

52 Week Range

53.15 - 137.98



Fri 18

Mon 21

Tue 22

**XAG/EUR**  
Silver Spot Euro

Date	Open	Hight	Low	Close
Sep 22, 2020	\$20.99	\$21.43	\$20.33	\$20.83
Sep 21, 2020	\$22.61	\$22.73	\$20.22	\$21.00
Sep 18, 2020	\$22.84	\$22.94	\$22.52	\$22.62



Single platform

# APIs, WebSocket, SDKs unified for all financial data

We bring everything together that is required to build a successful trading system, fintech product, and empower your research. Twelve Data’s products include [stock](#), [forex](#), [ETF](#), [indices](#), [fundamentals](#), [various spreadsheets add-ins](#), and everything in between.

We also help to build unique [solutions](#), [educate](#), [level-up the business](#), and much more.

Start with market data

```
1  {
2    "symbol": "JPM",
3    "name": "JPMorgan Chase & Co",
4    "exchange": "NYSE",
5    "currency": "USD",
6    "datetime": "2021-03-26",
7    "open": "154.30",
8    "high": "155.28",
9    "low": "152.92",
10   "close": "153.00",
11   "volume": "9,283,955",
12   "previous_close": "152.55",
13   "change": "0.45",
14   "average_volume": "18,613,062"
15 }
```

Designed for developers

# The most powerful and easy-to-use APIs

We understand how tedious it is to think about different formats and integration barriers. [Our APIs](#) share easy to understand logic across all endpoints. WebSockets share the same structure, so you get 2 in 1.

[Read the docs](#)



Tools for your stack

We provide you with SDKs for the most popular languages.

[See libraries >](#)



WebSocket

Connect to a real time stream of ultra low latency data.

[Explore docs >](#)

API

WebSocket

```
1  from twelvedata import TDClient
2
3  td = TDClient(apikey="YOUR_API_KEY_HERE")
4
5  ts = td.time_series(
6      symbol="AAPL",
7      interval="1min",
8      outputsize=12,
9  )
10
11 print(ts.as_json())
```

Python

C++

C#

Java

R

Why Twelve Data

A technology-first approach together with exceptional service.



Data coverage

We support around 100 000 symbols across a different range of assets available from all over the world.



Fast moving

Every day, from year to year we release hundreds of new features to make sure that you stay ahead of the industry.



Reliability

Our system has 99.95% SLA. Twelve Data tends to raise the standards for quality and uptime to the next level.



Latency

Real time data streaming via WebSockets has ultra low latency at only ~170 ms on average for all instruments.

Think globally

More than data provider

For those individuals and companies who want to challenge the world, Twelve Data makes it possible to achieve their goals. Our decentralized team is located across the world and helps to make next big step.

700M+

API requests performed per day,  
peaking 1,000,000 per minute.

250+

Exchanges are supported,  
across the world.

80k+

Different financial assets  
and many more to come.

90+

Countries from where data  
comes from.

Explore data

# All markets data

 Search through 100K+ symbols



Stocks

[160,000+ symbols](#)



Forex

[2,000+ pairs](#)



Crypto

[4,800+ pairs](#)



ETFs

[25,000+ symbols](#)



Indices

[1,800+ symbols](#)

Ready to get started?

Explore [Market Data](#), or create an account and start working with the data. You can also leave us a note and we will prepare custom plan for your needs.

[Start now](#)

[Contact sales >](#)



Simple pricing

Pay for what you need. No hidden or implicit fees.

[Pricing >](#)



Begin with API

Integrate Twelve Data in as little as 5 minutes.

[Docs >](#)

twelvedata

Copyright © 2024 Twelve Data Pte. Ltd.  
All rights reserved.



Products

Developers

Stocks

API documentation

Forex (FX)

WebSocket documentation

Crypto

Request builder

ETFs

Indices

Exchanges

Search symbols

Excel

Google Sheets

Pricing

Company

Resources

About

Support

Customers

Contact

Education

Privacy policy

Expertise

Terms of use

Careers

Sitemap

Brand assets

Blog

News

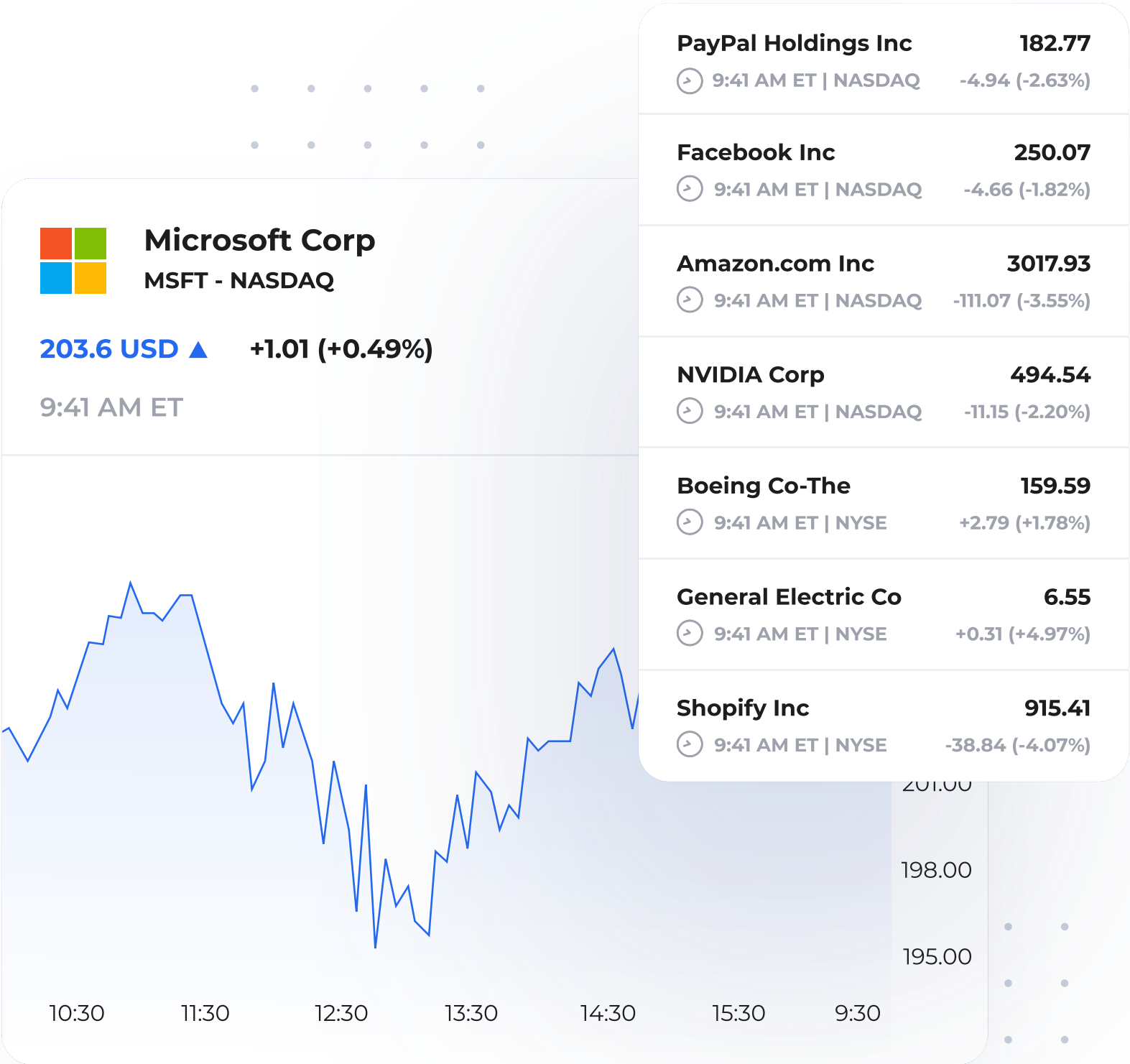


We've just launched a new portal to help you explore stocks, crypto, ETFs, and more data  
[Access >](#)

# Stocks market data JSON API

US & international stock market data with real-time streaming and historical data API.

[Start now](#)      [Contact sales >](#)



Tick by tick

Real-time tick by tick data grants full control over the current stock quotes.



**Intervals**

API data is accessible in various aggregated intervals from 1-minute to 1-month.



**Low latency**

Institutional grade low latency (170ms) data streaming via [WebSocket](#).



**Simple integration**

Integrate Twelve Data in just a few minutes using our SDKs and [spreadsheet add-ins](#).

**Global coverage**

# Stock markets as is

Access to all stock exchanges in the world, with a single API - sharing the same format for all data.

# Basic →

All US market data. Trial symbols for international exchanges.

- [United States](#) [Real-time](#)
- [Crypto](#) [Real-time](#)
- [Forex](#) [Real-time](#)

# Grow →

All US market data + exchanges from Canada, India, Europe, Turkey, and Brazil.

- [Germany](#) [15 min delay](#)
- [United Kingdom](#) [Real-time](#)
- [Canada](#) [Real-time](#)
- [France](#) [15 min delay](#)
- [Netherlands](#) [15 min delay](#)
- [Ireland](#) [15 min delay](#)
- [Portugal](#) [15 min delay](#)
- [Belgium](#) [15 min delay](#)
- [United States](#) [Real-time](#)
- [India](#) [Real-time](#)
- [Brazil](#) [15 min delay](#)
- [Turkey](#) [15 min delay](#)
- [Commodity](#) [Real-time](#)

# Pro

All from the Grow plan + most of international exchanges

- [Sweden](#) [Real-time](#)
- [Argentina](#) [30 min delay](#)
- [Greece](#) [15 min delay](#)
- [Qatar](#) [15 min delay](#)
- [Malaysia](#) [15 min delay](#)
- [Indonesia](#) [10 min delay](#)
- [New Zealand](#) [30 min delay](#)
- [South Africa](#) [15 min delay](#)
- [Czech Republic](#) [30 min delay](#)
- [Hungary](#) [15 min delay](#)
- [Egypt](#) [30 min delay](#)
- [Israel](#) [30 min delay](#)
- [Estonia](#) [Real-time](#)
- [Chile](#) [15 min delay](#)
- [Lithuania](#) [Real-time](#)

- [Latvia](#)

[Real-time](#)
- [Venezuela](#)

[15 min delay](#)
- [Mexico](#)

[30 min delay](#)
- [Russia](#)

[Real-time](#)
- [Taiwan](#)

[30 min delay](#)
- [China](#)

[30 min delay](#)
- [Austria](#)

[Real-time](#)
- [Real-time](#)
- [United Arab Emirates](#)

[Real-time](#)
- [Pakistan](#)

[EOD delay](#)
- [Denmark](#)

[Real-time](#)
- [Japan](#)

[30 min delay](#)
- [Italy](#)

[30 min delay](#)
- [Singapore](#)

[30 min delay](#)
- [Spain](#)

[15 min delay](#)
- [Saudi Arabia](#)

[15 min delay](#)
- [Peru](#)

[EOD delay](#)
- [Finland](#)

[Real-time](#)
- [Norway](#)

[15 min delay](#)
- [South Korea](#)

[30 min delay](#)
- [Australia](#)

[Real-time](#)
- [Switzerland](#)

[30 min delay](#)
- [Thailand](#)

[15 min delay](#)
- [Ireland](#)

[Real-time](#)

# Enterprise

All market data from every exchange.

- [United Arab Emirates](#)

[Real-time](#)
- [Iceland](#)

[Real-time](#)
- [Philippines](#)

[Real-time](#)
- [Colombia](#)

[EOD delay](#)
- [Jamaica](#)

[EOD delay](#)
- [Poland](#)

[EOD delay](#)
- [Botswana](#)

[EOD delay](#)
- [Kuwait](#)

[EOD delay](#)
- [Romania](#)

[EOD delay](#)

Single platform

## Developer-centric

Rapidly integrate our stock market data into your project with modern languages, from Python to Golang. Using Twelve Data's API means less code maintenance and more time towards building a great product.

- Sample code & examples
- Extensive reference data
- Responses with metadata
- JSON & CSV formats
- Changelog, roadmap & new features voting

API docs

WebSocket docs

API

WebSocket

```
1  from twelvedata import TDClient
2
3  td = TDClient(apikey="YOUR_API_KEY_HERE")
4
5  ts = td.time_series(
6      symbol="TSLA",
7      interval="1min",
8      outputsize=12,
9  )
10
11 print(ts.as_json())
```

Python

C++

C#

Java

R

Reference data

# Create powerful financial applications



## Search

Easily add a lookup of any symbol into your app with the most effective search in the industry.

[Explore](#) >



## Technical indicators

Extensive collection of indicators, ready to be used for technical analysis.

[Explore >](#)



**Fundamentals**

Financial information for the company: statements, balance sheets, cash flows, earnings, etc.

[Explore >](#)



**Extended hours**

Pre/Post market data for US equities from 1min to 30min intervals.

[Explore >](#)

**Institutional grade infrastructure.  
Designed to scale.**

**400,000,000+**

Requests per day

**50,000+**

Stocks available

**250,000+**

Events per second

**Curious, but not a developer?**

We love our products and the way it empowers new stories.  
We can help you to build projects of any difficulty, to deliver the highest quality.

Our expertise

Our customers

# Ready to get started?

Create an account and start integrating stock market data - no commitment or credit cards required. Or, contact us to prepare a custom solution for your business.

Start now

Contact sales >



## Simple pricing

Pay for what you need. No hidden or implicit fees.

[Pricing >](#)



## Begin with API

Integrate Twelve Data in as little as 5 minutes.

[API Reference >](#)



### Products

Stocks

Forex (FX)

Crypto

ETFs

Indices

### Developers

API documentation

WebSocket documentation

Request builder

Exchanges

Search symbols

Excel

Google Sheets

Pricing

Company

About

Customers

Education

Expertise

Careers

Brand assets

Blog

News

Resources

Support

Contact

Privacy policy

Terms of use

Sitemap



We've just launched a new portal to help you explore stocks, crypto, ETFs, and more data  
[Access >](#)

# Exchanges

Search by exchange name...

All plans      United States

15 Exchanges

Delay

Trading hours

Status

-	<a href="#">New York Stock Exchange, Inc.</a> <span>XNYS</span> <a href="#">United States</a>	<a href="#">Real-time</a> <span>CFD</span>	<a href="#">M-F, 09:30 - 16:00 (EDT)</a>	<a href="#">Closed</a>
-	<a href="#">NYSE Mkt LLC</a> <span>XASE</span> <a href="#">United States</a>	<a href="#">Real-time</a> <span>CFD</span>	<a href="#">M-F, 09:30 - 16:00 (EDT)</a>	<a href="#">Closed</a>
-	<a href="#">NYSE Arca</a> <span>ARCX</span> <a href="#">United States</a>	<a href="#">Real-time</a> <span>CFD</span>	<a href="#">M-F, 09:30 - 16:00 (EDT)</a>	<a href="#">Closed</a>
-	<a href="#">NASDAQ/NGS (Global Select Market)</a> <span>XNGS</span> <a href="#">United States</a>	<a href="#">Real-time</a> <span>CFD</span>	<a href="#">M-F, 09:30 - 16:00 (EDT)</a>	<a href="#">Closed</a>
-	<a href="#">NASDAQ/NMS (Global Market)</a> <span>XNMS</span> <a href="#">United States</a>	<a href="#">Real-time</a> <span>CFD</span>	<a href="#">M-F, 09:30 - 16:00 (EDT)</a>	<a href="#">Closed</a>
-	<a href="#">NASDAQ Capital Market</a> <span>XNCM</span> <a href="#">United States</a>	<a href="#">Real-time</a> <span>CFD</span>	<a href="#">M-F, 09:30 - 16:00 (EDT)</a>	<a href="#">Closed</a>
-	<a href="#">CBOE BZX U.S. Equities Exchange</a> <span>BATS</span> <a href="#">United States</a>	<a href="#">Real-time</a> <span>CFD</span>	<a href="#">M-F, 09:30 - 16:00 (EDT)</a>	<a href="#">Closed</a>
-	<a href="#">OTCQX Marketplace</a> <span>OTCQ</span> <a href="#">United States</a>	<a href="#">Real-time</a> <span>CFD</span>	<a href="#">M-F, 09:30 - 16:00 (EDT)</a>	<a href="#">Closed</a>
-	<a href="#">OTCQB Marketplace</a> <span>OTCB</span> <a href="#">United States</a>	<a href="#">Real-time</a> <span>CFD</span>	<a href="#">M-F, 09:30 - 16:00 (EDT)</a>	<a href="#">Closed</a>
-	<a href="#">OTC Pink Marketplace</a> <span>PINX</span> <a href="#">United States</a>	<a href="#">Real-time</a> <span>CFD</span>	<a href="#">M-F, 09:30 - 16:00 (EDT)</a>	<a href="#">Closed</a>
-	<a href="#">Expert Market</a> <span>EXPM</span> <a href="#">United States</a>	<a href="#">Real-time</a> <span>CFD</span>	<a href="#">M-F, 09:30 - 16:00 (EDT)</a>	<a href="#">Closed</a>
-	<a href="#">OTC Grey Market</a> <span>PSGM</span> <a href="#">United States</a>	<a href="#">Real-time</a> <span>CFD</span>	<a href="#">M-F, 09:30 - 16:00 (EDT)</a>	<a href="#">Closed</a>

-	<div><div>NASDAQ</div><div>XNAS</div></div> <div>United States</div>	<div>Real-time</div> <div>CFD</div>	<div>M-F, 09:30 - 16:00 (EDT)</div>	<div>Closed</div>
-	<div><div>OTC Link ATS - OTC Markets</div><div>OTCM</div></div> <div>United States</div>	<div>Real-time</div> <div>CFD</div>	<div>M-F, 09:30 - 16:00 (EDT)</div>	<div>Closed</div>
-	<div><div>ICE Futures US</div><div>NYBOT</div></div> <div>United States</div>	<div>Real-time</div> <div>CFD</div>	<div>M-F, 00:00 - 23:59 (EDT)</div>	<div>Open</div>



Copyright © 2024 Twelve Data Pte. Ltd.  
All rights reserved.



Products

- Stocks
- Forex (FX)
- Crypto
- ETFs
- Indices
- Exchanges
- Search symbols
- Excel
- Google Sheets
- Pricing

Developers

- API documentation
- WebSocket documentation
- Request builder

Company

About

Customers

Education

Expertise

Careers

Brand assets

Blog

News

Exchanges

Resources

Support

Contact

Privacy policy

Terms of use

Sitemap